

INTRODUCING OUR COMPANY



We are a multi award winning business with our Managing Director having more than 30 years' experience in the scaffolding industry, and we know what our clients expect from a supplier.

We are experts and dominate in high end residential, engineered and commercial projects and service greater Sydney and the Wollongong region.

When you award a contract you need to be able to trust your supplier, and know that they will deliver on time, on budget, and with safety as a priority. Quite simply, that's what Total Access Solutions can do for you. Whatever your scaffolding needs, and it doesn't matter how complex, or which type of scaffold, we have the solution covered.

We are an independent supplier with a total commitment to our clients. We do this by providing the most appropriate solution together with the best at the most competitive price possible. This, together with a responsible after sales service and a strong focus on developing long-term relationships with our clients, this sets us apart from our competitors.

OUR LEADERSHIP TEAM



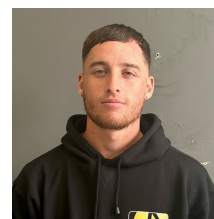
Stuart White
Managing Director
0404 779 878
swhite@totalaccesssolutions.com.au



Lucy Barling
Office Administrator
02 9524 6136
accounts@totalaccesssolutions.com.au



Ahmed Elkhoul
Scaffold Estimator
0424 809 755
aelkhoul@totalaccesssolutions.com.au



Marshall Toraya
Scaffold Estimator
0433 640 596
mtoraya@totalaccesssolutions.com.au



Rob Preston
Yard Foreman
02 9524 6136
yard@totalaccesssolutions.com.au

www.totalaccesssolutions.com.au



Telephone: (02) 9524 6136
Email: info@totalaccesssolutions.com.au
Address: 39-41 Alexander Ave, Taren Point

SERVICES AND CLIENTS



SERVICES

- **Steel Scaffold & Stair Access Towers**
- **Mobile Scaffolds**
- **Aluminium System Scaffolds**
- **Drop Scaffolds, Cantilever Scaffolds & Engineered Scaffolds**
- **Roof Edge Protection**

We have out works for many prominent clients in the Sydney region including, but not limited to:

- **NBM Remedial**
- **Taronga Zoo**
- **Featured on the TV Show 'Grand Designs Australia'**
- **Sydney City Toyota**
- **Jones Lang LaSalle**
- **Sutherland Shire Council**
- **FDC Fitout & Construction**
- **Jemina**

We work with a high level safety management system which is audited every 3 months for consistency. We have a strong commitment to safety and every day we all live and breathe one of our leading core values of 'safety above profit'.

I hope that we can offer you our assistance in the near future.



As featured on Grand Designs Australia May 2017!



www.totalaccessolutions.com.au



Telephone: (02) 9524 6136

Email: info@totalaccessolutions.com.au

Address: 39-41 Alexander Ave, Taren Point